

CAMPUS RESOURCE FAIR



See who's here today! They'll be out tabling from 11:00AM-2:00PM from Welch Field to Privett Plaza.

ACADEMIC DEPARTMENTS

PRIVETT PLAZA

Find your major and talk to your future professors about the classroom experience. You'll also learn more about the 4+1 accelerated bachelor's and master's degree programs.

STUDENT ORGANIZATIONS

COBBLESTONE PATHWAY IN BETWEEN MCLAREN + LO SCHIAVO

- Arab Student Union
- Beta Alpha Psi (Business Professional Organization)
- Black Student Union
- Chinese Student Association (CSA)
- College Panhellenic Association
- Club Water Polo Team (Men's and Women's)
- Exercise is Medicine On Campus
- Indian Student Organization
- Kasamahan (Filipinx-American Organization)
- Latinas Unidas
- Latine Undergraduate Network of Activists (L.U.N.A.)
- Minority Association of Pre-Med Students
- Model United Nations
- Muslim Student Association
- Nursing Students Association (NSA)
- Tau Tau Chapter of Delta Sigma Theta Sorority, Incorporated
- Women in Pre Medicine Society

STUDENT SERVICES

WELCH FIELD

- Alumni Engagement
- Black Achievement Success and Engagement (BASE)
- Career Services Center
- Center for Academic and Student Achievement (CASA)
- Counseling and Psychological Services (CAPS)
- First Generation Initiatives/ Muscat Scholars Program
- Gender & Sexuality Center
- Gleeson Library
- Intercultural Center
- Learning, Writing, and Speaking Centers (LWSC)
- Off Campus Living and Residence Life
- St. Ignatius Institute, Living Learning Community
- Student Disability Services
- Student Leadership and Engagement
- Title IX Resources, Education, Prevention, Support (REPS)
- University Ministry
- University Ministry Arrupe Immersions

GET 20% OFF AT THE USF BOOKSTORE!

Check your folder for the coupon, and bring it to the register at the bookstore (located in the University Center 1st floor, right across from McLaren).

SUGGESTED ITINERARIES

Need help picking sessions? Here's what we suggest:

ALL STUDENTS (GENERAL)

- Session I:** Mock Lecture OR Students of Color Panel
- Session II:** Mock Lecture OR From Curriculum to Careers
- Session III:** The Power of Perspective: Student Mixer OR Getting Involved in Student Organizations

TRANSFER STUDENTS

- Session I:** From Curriculum to Careers
- Session II:** Transfer Student Experience
- Session III:** Registration 101

NURSING STUDENTS

- Session I:** The Community of Immunity (Mock Lecture)
- Session II:** Nursing Student Lab Tours
- Session III:** Nursing Student Panel

PARENTS

- Sessions I or II:** Living in the USF Community OR From Curriculum to Careers
- Session III:** Campus Resource Fair OR Home Away From Home - A Mixer for Bay Area Newcomers

SPANISH-SPEAKING FAMILIES

- Session I:** Sesión informativa en español
- Session II:** Visita guiada por el campus
- Session III:** Campus Resource Fair



SATURDAY, APRIL 11, 2026

DESTINATION USF



We are so excited you're here! We've got a full day in store for you, so make the most of your time by asking questions, talking to current students, and exploring our beautiful campus and city.

8:30-9:15AM OPTIONAL EARLY BIRD SESSION: FINANCIAL AID 101 COWELL 106

Join the Office of Financial Aid to learn about types of aid, cost of attendance, completing outstanding requirements, requesting a review of your financial aid offer, and accepting your financial aid package. Recommended for students who are still in the process of applying for aid.

8:45-9:45AM CHECK IN & LIGHT REFRESHMENTS SOBRATO CENTER

Optional campus tours will depart from Sobrato at 8:30AM, 8:45AM, 9AM, and 9:15AM.

9:45-10:30AM UNIVERSITY WELCOME SOBRATO CENTER

USF President, **Salvador D. Aceves**
Associate Vice Provost for Strategic Enrollment Management,
Sherie Gilmore-Cleveland
Senior Admission Counselor, Event Manager **Jewel Jurisprudencia**

10:45-11:30AM SESSION I SEE PAGE 2

11:45AM-12:30PM SESSION II SEE PAGE 2

12:30-1:15PM LUNCH WELCH FIELD

1:30-2:15PM SESSION III SEE PAGE 2

Optional late-bird campus tours will depart from LoSchiavo at 2:20PM.



THROUGHOUT THE DAY: TALK TO AN ADMISSION COUNSELOR

Gleeson Plaza

Questions about your next steps as an admitted student? Our admission counselors are here to help.

MEET WITH FINANCIAL AID

University Center, 5th Floor

The Office of Financial Aid will be offering walk-in appointments from 10:45AM-2:15PM.

SAY YES TO USF!

Gleeson Plaza

We're ready when you are! Submit your enrollment deposit today and you'll be able to register for classes on April 28 — two months ahead of the rest of the class.

CHECK YOUR LUGGAGE

Gleeson Library Atrium

Come inside the library to get your bags tagged and stored in a secure location. Please pick up your luggage by 2:15PM.

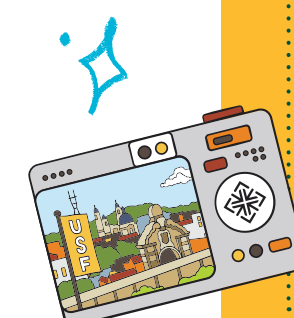
WiFi USF Connect | No password needed

Instagram, TikTok, @USFCA_ADMISSION

BLACK ACHIEVEMENT SUCCESS AND ENGAGEMENT (BASE) RECEPTION

2:30-4:00PM
FROMM HALL, BERMAN ROOM

After the day's events, please join us for a reception to meet members of BASE and learn how Black students are supported on campus. Appetizers and dessert will be served. This event is open to all USF community members.



SESSION I: 10:45-11:30AM

MOCK LECTURES, FOR STUDENTS ONLY

- > **PROMPT LIKE A PRO: COMMUNICATION AND AI**
KALMANOVITZ 111 | Allison Thorson
- > **NEURODIVERSITY**
KALMANOVITZ 163 | Sarah Hillenbrand
- > **BEYOND MAGIC: THE SOCIAL PSYCHOLOGY OF ROMANTIC RELATIONSHIPS**
KALMANOVITZ 367 | Zachary Reese
- > **NATIONALISM IN A GLOBAL CONTEXT**
KALMANOVITZ 167 | John Zarobell
- > **THE COMMUNITY OF IMMUNITY**
HARNEY 136 | Brian Thornton
- > **THE BLACK DEATH IN THE MIDDLE AGES**
COWELL 312 | Martin Claussen
- > **UNLOCKING GROWTH THROUGH MARKETING**
COWELL 313 | Ryan Langan



OPEN LABS, OPEN TO ALL STUDENTS

- > **ORGANIC CHEMISTRY OPEN LAB**
LO SCHIAVO 304, LO SCHIAVO 306 | Herman Nikolayevskiy
- > **OPEN BIOLOGY LAB**
LO SCHIAVO 205, LO SCHIAVO 208, HARNEY 250 | Nico Wagner
- > **EXPLORATION IN ENVIRONMENTAL SCIENCE**
HARNEY G05 | Tracy Benning
- > **METACOGNITION AND LEARNING LAB**
KALMANOVITZ G23 | Ed Munnich
- > **PLASMAS AND AI: LASERS, LIGHT, AND MACHINE LEARNING**
HARNEY G70 | Milka Nikolic



GUIDED SESSIONS, OPEN TO ALL

- > **FROM CURRICULUM TO CAREERS**
LO SCHIAVO 303 | See how the Career Services Center opens doors for students to grow professionally, secure internships, and expand their network both in the Bay Area and around the world.
- > **LIVING IN THE USF COMMUNITY**
MCLAREN 252 | Learn more about on-campus housing options as well as Living Learning Communities, where you'll live and take classes with students with similar interests.
- > **LAUNCHING YOUR PRE-HEALTH JOURNEY AT USF**
MCLAREN 250 | Discover how USF supports future healthcare professionals through practical advising and a supportive community.
- > **FIND YOUR FIRE: WHERE PASSION MEETS JUSTICE**
FROMM HALL, MAIER ROOM | A Jesuit education connects passion, purpose, and leadership. In this interactive session, you'll discover what drives you and how to create meaningful impact.
- > **MEET THE HONORS COLLEGE**
COWELL 107 | A review of the Honors College curriculum and student experience. *This session is only for students who have applied or been admitted to the Honors College.*
- > **HORIZON COLLECTIVE TALK & TOUR**
FROMM HALL, BERMAN ROOM | Join Horizon faculty and Fellows for an overview of the Collective's first year, including sneak peeks of collaborative spaces and projects in the works. Recommended for students who have been admitted into the Horizon Collective Program.
- > **SESIÓN INFORMATIVA (EN ESPAÑOL)**
FROMM HALL, XAVIER ROOM | Esta sesión informativa cubrirá los programas académicos que ofrecemos y los próximos pasos para su estudiante. Después, tome una gira por el hermoso campus de USF con uno de nuestros estudiantes embajadores. Sesión para padres.
- > **STUDENTS OF COLOR PANEL**
FROMM HALL, MARASCHI ROOM | We're proud to be the #1 campus in the country for ethnic diversity! Learn how to find your community at USF.
- > **URBAN TRAIL WALK**
GLEESON PLAZA, WOLF AND KETTLE STATUE | Take a mindful walk around USF to practice self care and wellness.
- > **UNDERSTANDING YOUR FINANCIAL AID OFFER**
COWELL 106 | Learn how to read and understand your financial aid offer letter. *Recommended for students who have received a financial aid offer.*

SESSION II: 11:45AM-12:30PM

MOCK LECTURES, FOR STUDENTS ONLY

- > **WHY WE "OTHER" AND HOW TO CONNECT: FROM POLARIZATION TO EMPATHY IN GLOBAL POLITICS**
KALMANOVITZ 111 | Nora Fisher-Onar
- > **POLITICS IN EVERYDAY LIFE**
KALMANOVITZ 163 | Marco Durazo
- > **THE ICE AGE: POLICING IDENTITIES AND THE MYTH OF THE ILLEGAL**
KALMANOVITZ 367 | Hwaji Shin
- > **PUBLIC HEALTH, POLITICS, AND VACCINES**
COWELL 106 | Laura Chyu
- > **AN EVOLUTIONARY ARMS RACE**
COWELL 107 | Brandon Brown
- > **COMPUTER SCIENCE: COMPUTATIONAL DEMOCRACY AND TILINGS**
HARNEY 136 | Ellen Veomett and Mehmet Emre

OPEN LABS, OPEN TO ALL STUDENTS

- > **ORGANIC CHEMISTRY OPEN LAB**
LO SCHIAVO 304, LO SCHIAVO 306 | Herman Nikolayevskiy
- > **OPEN BIOLOGY LAB**
LO SCHIAVO 205, LO SCHIAVO 208, HARNEY 250 | Nico Wagner
- > **EXPLORATION IN ENVIRONMENTAL SCIENCE**
HARNEY G05 | Tracy Benning
- > **MAGNETS AND ENGINEERING: THINK LIKE AN ENGINEER**
HARNEY HIVE, BREAKOUT SPACE #150 | Akshay Pattabi
- > **METACOGNITION AND LEARNING LAB**
KALMANOVITZ G23 | Ed Munnich



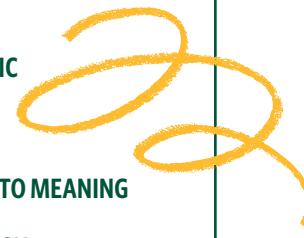
GUIDED SESSIONS, OPEN TO ALL

- > **FROM CURRICULUM TO CAREERS**
LO SCHIAVO 303 | See how the Career Services Center opens doors for students to grow professionally, secure internships, and expand their network both in the Bay Area and around the world.
- > **LIVING IN THE USF COMMUNITY**
MCLAREN 252 | Learn more about on-campus housing options as well as Living Learning Communities, where you'll live and take classes with students with similar interests.
- > **LAUNCHING YOUR PRE-HEALTH JOURNEY AT USF**
MCLAREN 250 | Discover how USF supports future healthcare professionals through practical advising and a supportive community.
- > **GO GLOBAL: LEARN BEYOND THE HILLTOP**
FROMM HALL, XAVIER ROOM | Join us to learn how you can study and intern abroad.
- > **FIRST GENERATION STUDENT EXPERIENCE**
FROMM HALL, MAIER ROOM | First Generation Initiatives (FGI) provides resources for first-generation students, including the Muscat Scholars Program and the USF Mentor Collective.
- > **TRANSFER STUDENT EXPERIENCE**
FROMM HALL, MARASCHI ROOM | Learn more about the transfer student community and ask questions about your pathway to a USF degree.
- > **LGBTQ+ COMMUNITY RESOURCE TOUR**
DEPARTS FROM OUTSIDE GLEESON LIBRARY | Join the Gender and Sexuality Center for a tour of Toler Hall's Gender Inclusive Housing floor, University Ministry's Qmmunity, and the Gender and Sexuality Center.
- > **VISITA GUIADA POR EL CAMPUS**
DEPARTS FROM FROMM HALL, XAVIER ROOM | Tome una gira por el hermoso campus de USF con uno de nuestros estudiantes embajadores. Sesión para padres.
- > **NURSING STUDENT LAB TOURS**
DEPARTS FROM UPPER PRIVETT PLAZA | Visit the Simulation and Skills Labs where you'll practice skills to use in real clinical settings.
- > **JAPANESE CULTURAL DEMONSTRATIONS**
COWELL 314 | Take a hands-on Japanese calligraphy tutorial alongside video demonstrations of classical music and the tea ceremony.
- > **WAYFINDERS: THACHER GALLERY TOUR**
DEPARTS FROM GLEESON PLAZA, WOLF AND KETTLE STATUE | Join a docent in USF's own art gallery to see the works of USF artists investigating physics, climate, and identity.

SESSION III: 1:30-2:15PM

MOCK LECTURES, FOR STUDENTS ONLY

- > **THINGS YOU DIDN'T KNOW YOU LOVED: THE POEM AS EXPLORATION**
KALMANOVITZ 111 | Dean Rader
- > **POWER DISTANCE AT THE COMPANY PICNIC (COMMUNICATION STUDIES)**
KALMANOVITZ 163 | Brandi Lawless
- > **NEUROSCIENCE OF SOUND: HOW THE BRAIN TRANSFORMS SOUND INTO MEANING**
COWELL 107 | Narayan Sankaran
- > **BEYOND MAGIC: THE SOCIAL PSYCHOLOGY OF ROMANTIC RELATIONSHIPS**
KALMANOVITZ 367 | Zachary Reese
- > **COMPUTER SCIENCE: COMPUTATIONAL DEMOCRACY AND TILINGS**
HARNEY 136 | Ellen Veomett and Mehmet Emre



OPEN LABS, OPEN TO ALL STUDENTS

- > **MOTION ANALYSIS LAB**
HARNEY G75 | Gerwyn Hughes
- > **MAGNETS AND ENGINEERING: THINK LIKE AN ENGINEER**
HARNEY HIVE, BREAKOUT SPACE #150 | Akshay Pattabi

GUIDED SESSIONS, OPEN TO ALL

- > **GETTING INVOLVED IN STUDENT ORGANIZATIONS**
FROMM HALL, XAVIER ROOM | With 150+ student organizations at USF, discover how to explore new opportunities and find your place on campus.
- > **PATHWAYS TO PUBLIC SERVICE AND THE COMMON GOOD**
COWELL 106 | Explore opportunities at the community, local, state, and national levels and tangible ways you can contribute to building a more just and sustainable world.
- > **SUPPORTING ELOQUENTIA PERFECTA AT USF**
LO SCHIAVO 303 | Meet student coaches from the Writing and Speaking Centers and learn how writing can help you find your voice and your community.
- > **REGISTRATION 101**
MCLAREN 252 | Learn how to register for classes and see what a sample schedule looks like. *Recommended for students who have committed to USF.*
- > **THE POWER OF PERSPECTIVE: STUDENT MIXER**
FROMM HALL, MARASCHI ROOM | In this informal gathering hosted by the Cultural Centers, you'll mingle with current USF students and ask any questions you want about student life, navigating USF, or finding community. *Recommended for students.*
- > **NURSING STUDENT PANEL**
MCLAREN 250 | Hear how current nursing students apply skills they've learned in the classroom to treat patients at their clinical placements.
- > **HOME AWAY FROM HOME: A MIXER FOR BAY AREA NEWCOMERS**
FROMM HALL, MAIER ROOM | Mingle with other families who are from outside the Bay Area Refreshments will be served. *Recommended for parents/families.*

NOTES

ALL DAY LONG EVENTS

Drop in to any of these activities happening throughout the day.

VISIT A DORM

Departs from Sobrato Center

Dorm tours will depart at 10:45AM, 11:45AM, 12:30PM, 1:30PM, and 2:30PM.

CAMPUS RESOURCE FAIR

Welch Field to Privett Plaza

From 11:00AM-2:00PM, meet the student clubs and campus resources that will be a core part of your college experience. Don't be shy — ask questions and get answers straight from the source! Flip to the back page to see who's here.

STUDENT DISABILITY SERVICES (SDS) OPEN OFFICE HOURS

Gleeson Library, Lower Level 20

SDS works to facilitate an inclusive environment for students with disabilities. SDS staff will be available from 12:00-2:00PM to answer your questions about accommodations and support services for students with disabilities.

