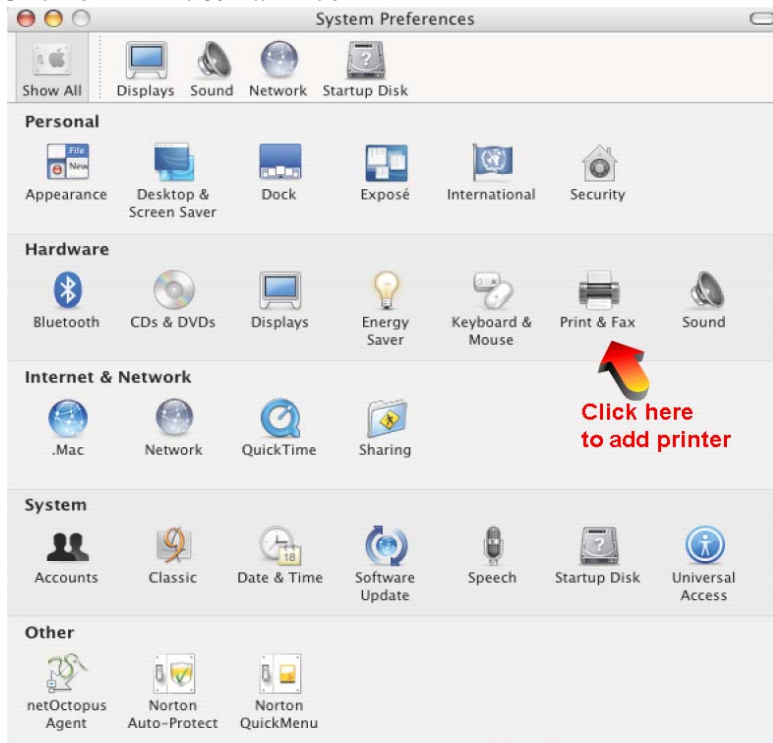


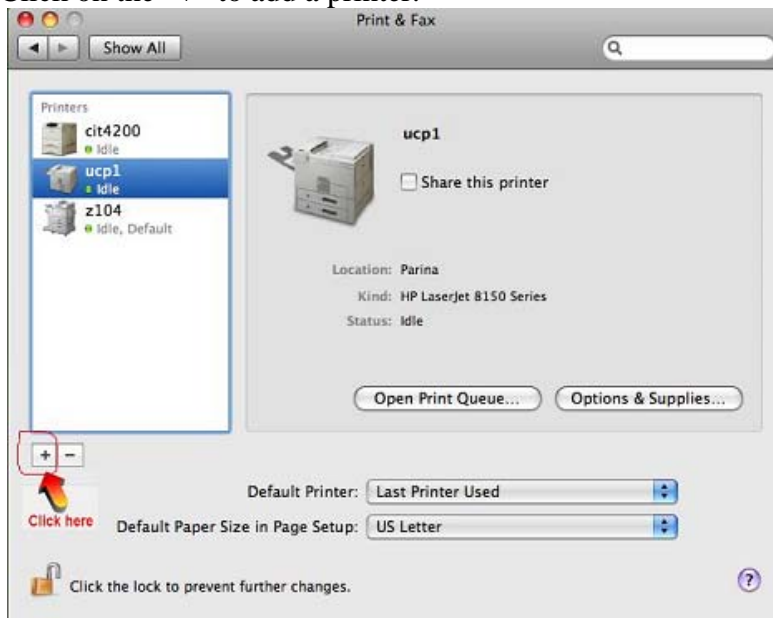
## Computer Lab USFwireless Printing Instructions for Macs:

For first time users, add the lab printer(s) to your Mac laptop computer by following these instructions:

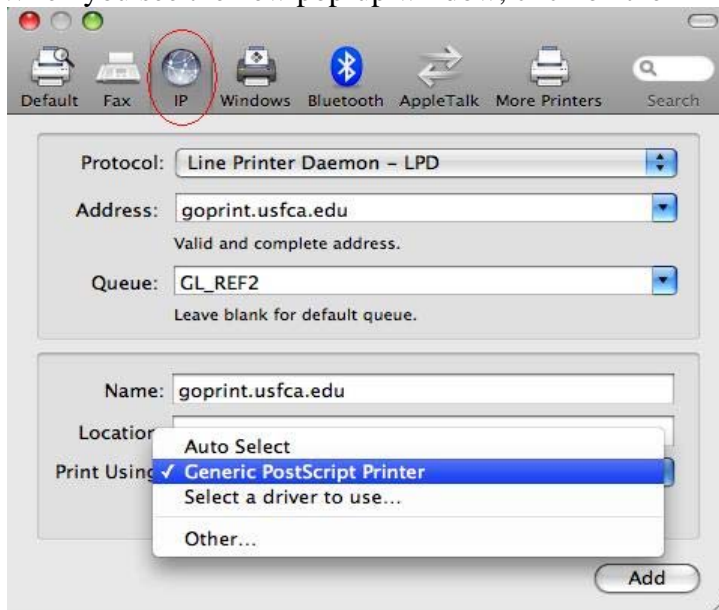
- 1) Turn on your AirPort connection
- 2) Log onto USFwireless ([http://www.usfca.edu/its/faqs/wireless/wireless\\_faq.html](http://www.usfca.edu/its/faqs/wireless/wireless_faq.html))
- 3) When you are on USFwireless, open your computer's System Preferences
- 4) Click on "Print & Fax" icon



- 5) Click on the "+" to add a printer.



- 6) When you see the new pop-up window, click on the “IP icon.



- 7) Select “Line Printer Daemon - LPD” from the Protocol.  
8) For Printer Address, enter: **goprint.usfca.edu**  
9) For Queue, depend on where you at. Please check the near by location for the queue name at the bottom of this instruction. (i.e. if you are near Gleeson library, you can enter Queue Name as: **GL\_REF2** to print to the printer at Gleeson library reference area).  
10) Select “HP” for Printer Model, then select printer Model Name (either HP LaserJet 4200 or 4300 Series). If you don’t know the Printer Model, you can just select “Generic PostScript Printer”.  
11) Click on “Add” to complete the setup.

To Print:

- 1) Select and print the file as you would do normally by going to FILE and selecting PRINT.
- 2) Select the printer that you have added and click PRINT.

---

All **Queue Names** for the near by printer locations: (for Step 9 above)

CIT lab: [cit4200](#) or [cit4250](#)

Learning and writing lab (Cowell 227): [CO\\_227\\_HP](#)

Nursing skill lab (Cowell 120): [CWL120](#)

Cowell 225 lab: [CWL2251](#) or [CWL2252](#)

Cowell 226 lab: [CWL2261](#) or [CWL2262](#)

Gleeson Ref Area: [GL\\_REF2](#), [GL\\_REF3](#) or [GL\\_REF\\_COLOR](#)

Gleeson Periodical and Study Room Area (2<sup>nd</sup> floor): [GL\\_PER](#)

Gleeson ITS lab area (1<sup>st</sup> floor): [GL3](#)

Gleeson ITS lab area (2<sup>nd</sup> floor): [GL1](#) or [GL2](#)

LMN building (ITS Help Desk area): [LMNITS](#)

Language lab: [LMRB1](#) or [LMRB2](#)

Malloy and Phelan Hall, MH lab: [MC102B](#) or [MC1331](#)

University Center, Parina lab: [UCP2](#) or [UCP3](#)