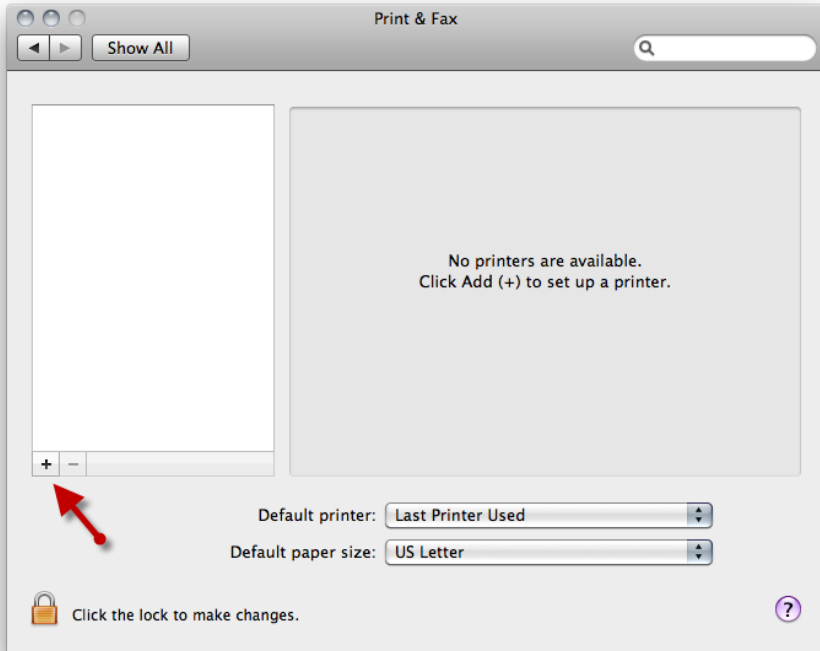


## Printing to computer lab printers using a Mac laptop

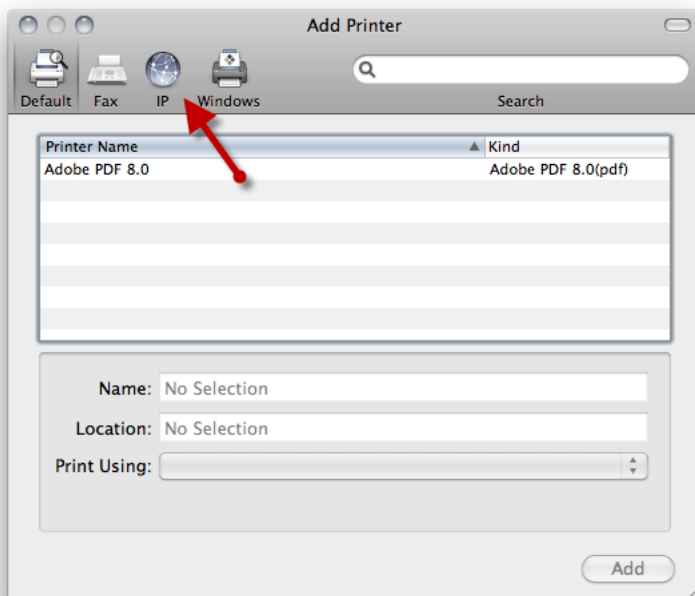
Connect to USFWireless (make sure to open a web browser and login). If you need directions for this go to <http://www.usfca.edu/its/network/wirelessfaq/>

Open **System Preferences** and click the **Print & Fax** icon.

When the Print & Fax window comes up click the **+** icon near the left side of the window to add a printer.



At the Add Printer window click the icon labeled **IP** that is along the top row.



Set the **Protocol** field to **Line Printer Daemon – LPD**.

The screenshot shows the 'Add Printer' window with the following fields and values:

- Protocol:** Line Printer Daemon – LPD (highlighted with a red circle)
- Address:** (empty) with the error message "Invalid or incomplete address."
- Queue:** (empty) with the instruction "Leave blank for default queue."
- Name:** (empty)
- Location:** (empty)
- Print Using:** Choose a Driver or Printer Model
- Add** button

Set the **Address** field to **goprint**.

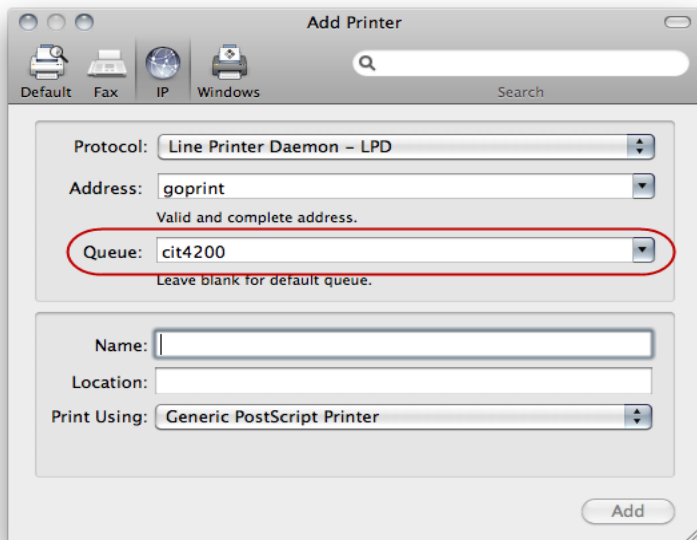
The screenshot shows the 'Add Printer' window with the following fields and values:

- Protocol:** Line Printer Daemon – LPD
- Address:** goprint (highlighted with a red circle) with the message "Valid and complete address."
- Queue:** (empty) with the instruction "Leave blank for default queue."
- Name:** (empty)
- Location:** (empty)
- Print Using:** Generic PostScript Printer
- Add** button

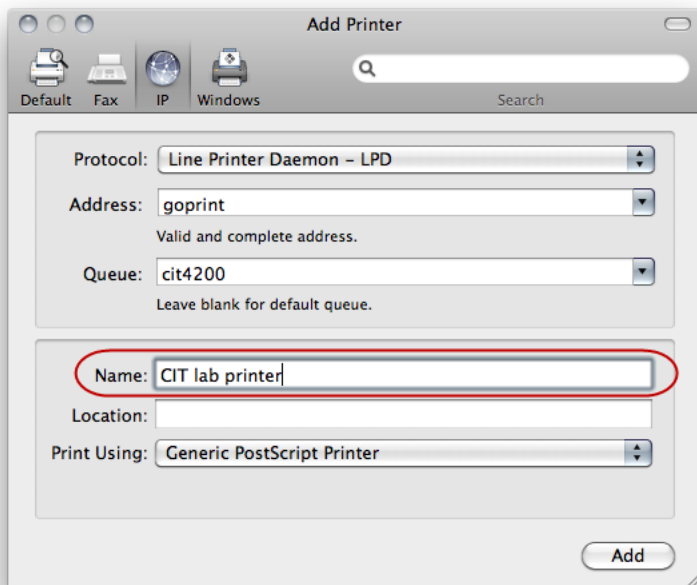
For the **Queue** field enter the queue name of the printer you want to use based on the following table.

<b>LOCATION</b>	<b>QUEUE NAME</b>	<b>PRINTER MODEL</b>
CIT Lab	<b>cit4200</b>	HP Laserjet P4010 Series
	<b>cit4250</b>	HP Laserjet 4250
	<b>cit_color</b>	HP Color Laserjet 4700
Learning & Writing Center	<b>co 227 HP</b>	HP Laserjet P2015 Series
Cowell 214	<b>cw12251</b>	HP Laserjet 4300 Series
Cowell 216	<b>cw12261</b>	HP Laserjet P4010 Series
Gleeson Reference Area	<b>gl_ref2</b>	HP Laserjet P4010 Series
	<b>gl_ref3</b>	HP Laserjet P4010 Series
	<b>gl_ref_color</b>	HP Color Laserjet 4700
Gleeson Periodical Area	<b>gl_per</b>	HP Laserjet P4010 Series
Gleeson 2 <sup>nd</sup> floor	<b>gl1</b>	HP Laserjet P4010 Series
	<b>glc</b>	HP Color Laserjet 4700
Gleeson 1 <sup>st</sup> floor ITS area	<b>gl3</b>	HP Laserjet P4010 Series
LMN ITS Help Desk area	<b>lmnits</b>	HP Laserjet 4000 Series
Malloy 102	<b>mc102b</b>	HP Laserjet 4350
Malloy 101	<b>mh101d</b>	HP Laserjet 4300 Series
	<b>mh_color</b>	HP Color Laserjet 4700
Pedro Arrupe Lab	<b>pedroarrupe</b>	HP Laserjet 4300
Lone Mountain Rossi Lab	<b>ros1</b>	HP Laserjet 4350
	<b>rosc</b>	HP Color Laserjet 4600
UC Parina Lab	<b>ucp1</b>	HP Laserjet P4010 Series
	<b>ucpc</b>	HP Color Laserjet 4700
Zief 104	<b>z_104</b>	HP Laserjet 9050
Zief 001	<b>z_LL</b>	HP Laserjet 9040

In the illustration below the cit4200 printer from the CIT lab is being used.

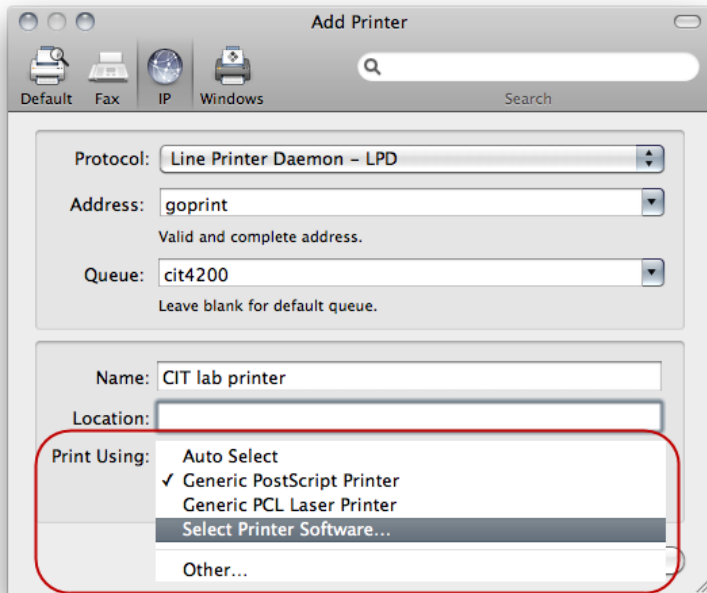


For the **Name** field, enter a descriptive name of your choice that will help you remember which printer you selected. When printing you will identify this printer by the name you use here.

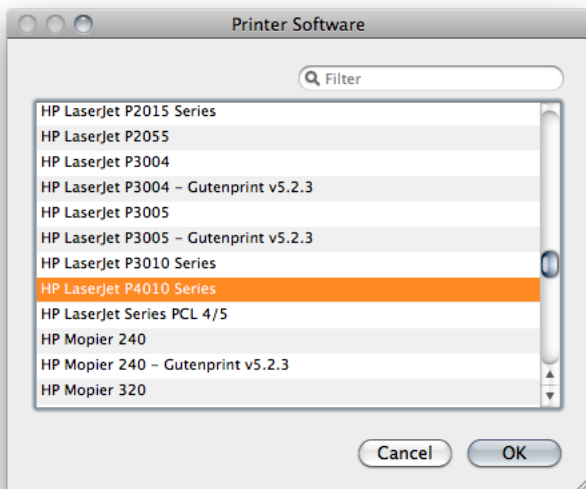


The **Location** field can be left blank.

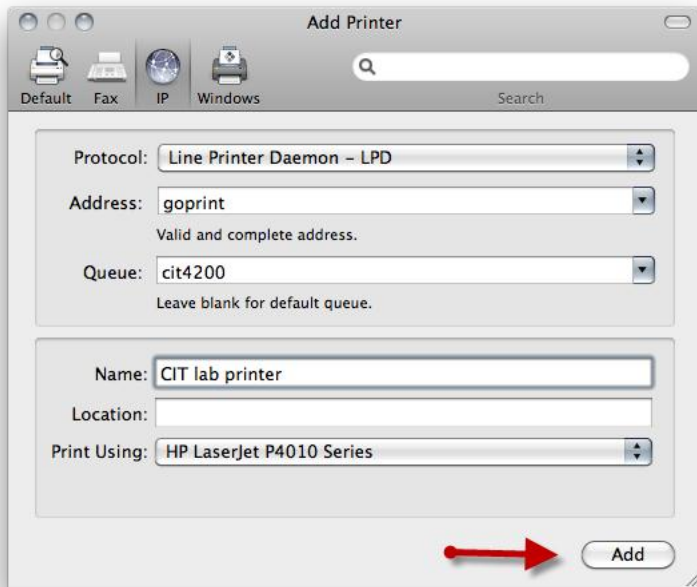
For the **Print Using** field select **Select Printer Software...** (on older Mac versions it might be **Select a driver to use...**)



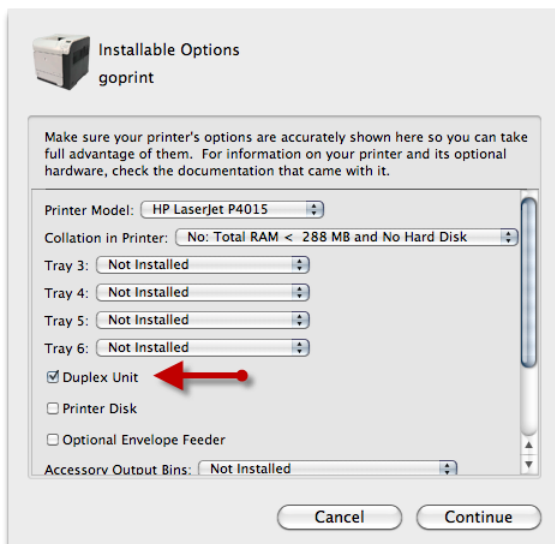
Select the appropriate printer model from the list that comes up and click OK. Use the same table above that you used for determining the print queue name to determine which model to use. If you do not see the printer listed you can use the option for **Generic PostScript Printer**.



Click **Add**.

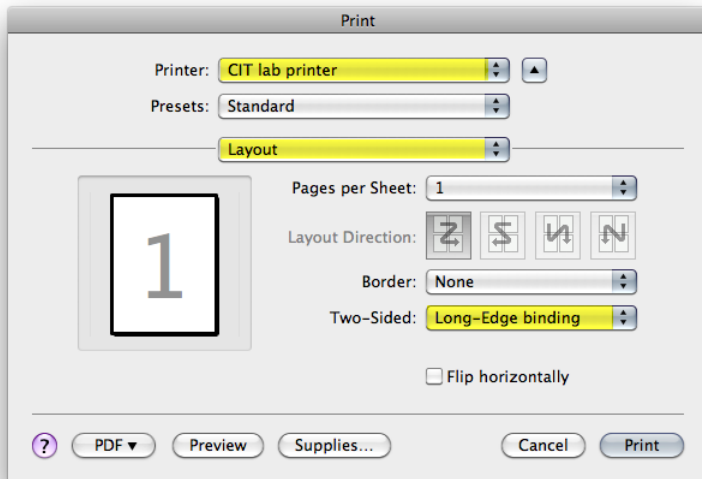


At the next window you can indicate any options the printer has. If you want to print double sided you must check **Duplex Unit** here. **Note:** some printers don't have the capability to print double sided and checking this box will have no effect. Then click **Continue**.



The printer will now be setup on your computer. To print to it from an application, use the print command and select the printer by the name you chose above. If you want to print double sided go to the **Layout** section of the printer

options. Set Two-Sided to either **Long-Edge binding** or **Short-Edge binding**. Typically Long-Edge binding is used but for certain layouts Short-Edge binding may be better.



After you print, your print job will show up on the GoPrint paystation under the username you are using on your computer, not your USFConnect username.