

Newsletter

...straight from the librarian's mouth

April Library Displays

Kelci Baughman McDowell

Displays in the foyer of Gleeson Library highlight library materials on a specific topic. Staff showcase movies, books, periodicals, and other available materials that will help you learn more.

African Street Children

This display, which ran from 3/30-4/10, 2009, was the brain child of senior Katja Kellerer, a member of the [USF Umthombo Club](#), and was in conjunction with Street Children Awareness Week (4/1-4/8, 2009). It sought to educate USF students about homeless and parentless children in Africa. Because of the AIDS epidemic in Africa and extreme poverty, many children ...con't on pg. 3

Library Zen: New Access Services

Colette Hayes

Imagine a day like this one: You're running late to campus and you realize, having finally gathered yourself, you've scheduled back-to-back classes and meetings. Luckily, you have a short half hour



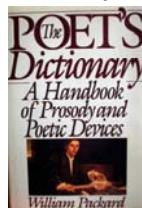
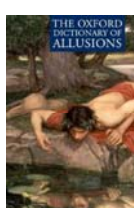
Library 2.0 Image: Library Zen, [used with permission](#).

...con't on pg. 2

Reference Books of the Month: Dictionaries

Amna Ali

Gleeson Reference is home to a wealth of dictionaries ideal for quick searches on specific terms and phrases, or browsing and explorations in subjects of interest. We have dictionaries about specific topics such as microbiology or molecular biology as well as more broad-based topics such as cultural literacy or the classical age. Remember, these books are library use only.



...con't on pg. 4

Surprising Wonders of Periodicals

Patrick Dunagan

Before the advent of library databases with vast full text holdings, scholars trudged up to the Periodicals Department. Paper periodicals live on despite the neglect and casual looks of passersbys as they scurry to a favorite screen at the second floor computer lab. Believe it or not, bountiful holdings are available *only* in print and are comprised of surprising wonders.

For Poetry Fans:

One of several surprises hanging out in Periodicals is the complete run of [American Poetry](#) v.1 (1983)-v.7, no.3 (Spr 1990), poet-editor Lee Bartlett's terrific serial. ...con't on pg. 2

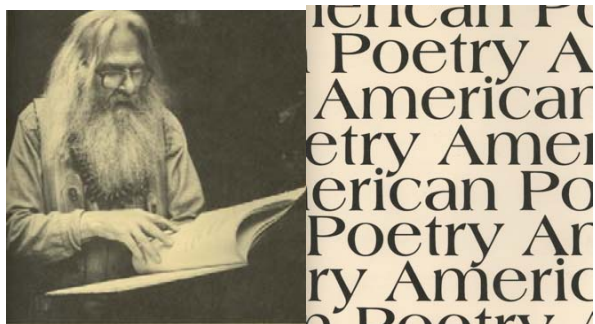
break to work on a paper you're revising. But you forgot your laptop and library books at home. Time will be tight today and you have a new list of books you need very soon for your next project. You calculate that if it takes you two minutes to find each book, and two minutes to run up and down the stairs of the library, you may be able to stay on schedule. "Brace yourself," you think. "Today's going to be rough." And tomorrow? It looks like much of the same.

Suddenly, you see the sunshine glinting off the glass windows of the [Gleeson Library/Geschke Center](#) Atrium, and you feel calm. Why? You remember that Gleeson Library can help. The [Access Services Department](#) lends out laptops, so you'll be able to find a quiet corner of the library to work on that paper after all. If you're an adjunct faculty member, you can [borrow a laptop](#) and use the fourth floor adjunct space in the library to get things done.

You also remember that at Gleeson you can connect to [wireless internet](#) throughout the library, and using the laptop you've checked out, you can quickly renew your library books online. But your books are overdue! Or you have Interlibrary Loan Fees you've been meaning to take care of! No problem. You can [log on to your library record](#), renew your books online, and now you can easily pay your library fines and /or fees online, too. Good thing you remembered your MasterCard or Visa.

...con't on pg. 4

Each issue covers a mixture of historical and contemporary American poets as well as issues of concern in poetics. A typical issue contains "Essays," "Notes & Documents," "Forum," and "Reviews." Walt Whitman, John Ashbery, Wallace Stevens, Carolyn Forché, Elizabeth Bishop, William Carlos Williams, Denise Levertov, and H.D. have been the subjects of essays. Gary Snyder's "Notes on the Beat Generation" appeared in the "Notes" section, in addition to "Selected letters 1941-1950" of Kenneth Rexroth and James Laughlin. The topics are not constrained to a single school or movement. For example, a "Forum" topic entitled "Sexual Poetics: Notes on Genre and Gender in Poetry by Women" appeared in 1983. Finally, the "Reviews" are focused and generous in all the issues.



General cultural and historical interest:

[Horizon: "A Magazine of the Arts"](#) provides a colorful and at times surprising throw-back to the last fifty years. The library has a complete run: v.1 (Sept 1958)-v.32, no.2 (Mar/Apr 1989). Many of the covers are adorned with colorful pastels, pleasing and/or disturbing to the eye. Inside these issues are articles on a wide array of cultural matters. For instance, "Troglydites: Putting architecture under-ground may turn out to be the ultimate solution to provide adequate shelter for the man of the future" (Spring, 1967 vol. IX, no. 2 pgs. 28-39), a charming piece that looks at various historical possibilities for dwelling inside the earth rather than above it. Beware: this is perhaps one of the most disarming titles in the periodicals collection.

...con't on pg. 3

PERIODICALS ...con't from pg. 2

For die-hard Californians:

Although incomplete, Gleeson's holdings of *Out West* (v.10 1899 – v.27 1907) provide a glimpse into the literary and cultural times on the West Coast at the turn of the century. Inside every issue are original essays and stories by often forgotten West Coast authors such as Mary Austin alongside original poems by the likes of Ina Coolbirth, among others. Dig that last name for a little while. California cool goes way back. There have been several literary renaissances on the West Coast and available here is first hand documentation from a hundred years ago. Every issue also has generous original photographs and a sketching of the day, documenting everything from architecture and street life to agricultural production and coastal sites.



These titles (and many more!) are shelved by title alphabetically on the second floor of the library. Titles beginning A-Am start on the Southwest side of the building; titles beginning An-Z pick back up on the Northwest side. An alphabetical shelving note: initial articles appearing at the beginning of a title, such as “a,” “an,” or “the” are ignored. Please leave used materials out on any desk or table. We keep track of the number of materials used and are more than happy to re-shelve them on your behalf. ■

APRIL DISPLAYS ...con't from pg. 1



are orphaned and have no family on which to fall back. Many end up becoming street children. The display consists of photos of street children and books on the topic. Librarian [Carol Spector](#), who assisted Katja, made a guide of library resources. The guide includes links to organizations such as Street Action, Umthombo, and FXB International; statistical sources such as Childinfo and AVERT; blogs such as World AIDS Orphans Day; and books you can check out from the library. You can view the guide on the [library web page](#).

National Poetry Month

The library celebrates National Poetry Month with a display that will run from 4/13-5/1, 2009 and a poetry reading on Thursday, 4/30/09. Both the display and the reading will showcase the poetry talent USF is blessed to have. The display will feature items such as circulating books in the library's collection authored or edited by USF faculty poets, rare books from the Donohue Rare Book Room that highlight Bay Area poetry, poetry journals from the Periodicals department, a bibliography hand-out of USF poets' works, and an interactive poetry activity.

The faculty poetry reading will occur on 4/30/09 at 7 pm in Gleeson Library's Thacher Art Gallery. David Holler, D.A. Powell, Dean Rader, Darrell Schramm, and Brian Teare will read. The USF Book Store will be selling copies of Powell's new release, *Chronic*, as well as Teare's new release, *Sight Map*. ■





Time will *still* be tight today, though, and you have a list of books you need very soon for your next project. Aha! Using the Access Services' [Paging](#) and [Faculty Book Delivery](#) Service, you can quickly request the books online through the [library catalog](#)! Access Services Staff will find the books in the stacks and have them ready for you at the front desk of the library by 5pm the next day. If you're a faculty member, with a click of a mouse you can have the books *delivered* to your campus department mail stop within a couple of business days. If you are a regional/distance student or faculty member, you can request a book via the library catalog and [Regional and Distance Services](#) will send it to you, too. This is good. This is all very good.

Later, with the swipe of your ID card, the Library gates open. You're looking forward to this half hour break. Posting up at the long, sturdy library tables upstairs, you're happy: you might have an extra minute to read the [newspaper](#). And the view from the third floor *is* spectacular! Laptop? Done. Fines and Fees? Done. Books? Done. Checking things off your to-do list (wait, where is that to do list again?) has never been quite so fun! And tomorrow? You *hope* it looks like more of the same. ■

- [Cassell's Dictionary of Slang](#) (PE3721.G74 2000) is one of a number of dictionaries at Gleeson that focus on slang and unconventional English, which tends to veer into the realm of the vulgar. Entries include parts of speech, etymology, approximate time periods, geography, and brief definitions.
- [The Oxford Dictionary of Allusions](#) (PE1580 .D45 2001) is a good source to turn to for concise reference help. Allusions used in the English language are grouped thematically under headings such as Anger, Change, Dreams, Explorers and Guilt and more than 180 other general headings.
- [The Poet's Dictionary: A Handbook of Prosody and Poetic Devices](#) (PN44.5 .P3 1989) is a valuable resource for those seeking to understand prosody, the specialized language of the craft of poetry. It is a collection of 132 definitions and samples. It particularly caters to practicing writers and poets. ■

Contributors



Colette Hayes works in Access Services at Gleeson. She is writing her MA thesis on poetry and libraries.



Patrick Dunagan has been the Periodicals and Bindery Specialist at Gleeson for 4 years. He's interested in poetry and poetics.



Kelci Baughman McDowell, editor, is the Reference Library Assistant. She likes cats.

Amna Ali is a Master of Library and Information Science student who is interning at Gleeson Library.