



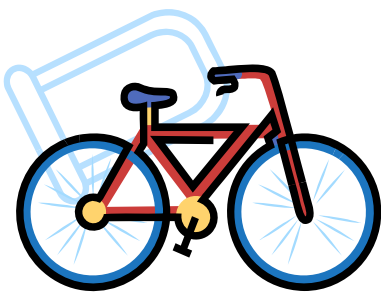
# UNIVERSITY OF SAN FRANCISCO DEPARTMENT OF PUBLIC SAFETY

## Pedestrian Safety Tips

- Always walk on the sidewalk. If there is no sidewalk and you must walk in the roadway, always walk facing traffic.
- Dress to be seen. Wearing bright/light colored clothing helps drivers see you. Reflective clothing is the best.
- Cross streets only at marked crosswalks or intersections.
- If crossing a multiple lane roadway, pedestrians should visually clear each lane as they proceed.
- If a car is parked where you are trying to cross, look for a driver who may pull out and not see you as he is looking for traffic.
- Remember telephone poles, utility boxes and parked vehicles block on-coming drivers ability to see you.
- Look LEFT – RIGHT – LEFT prior to entering the street.
- Give drivers ample time to stop prior to entering the crosswalk.
- Crossing at locations that have traffic signals helps motorist see you.
- Remove your headphones while crossing the street, so you can hear approaching traffic.
- Always hold a child by the hand while crossing the street and remember, **WALK don't run.**

## Walking Safety Tips

- Keep your keys in hand when moving about campus.
- Carry a noise-making device.
- Be alert, observant, and aware of your surroundings and people are around you.
- Dress to be seen!
- Avoid dark, vacant, or deserted areas. If you are followed or see suspicious activity, move to a lighted building or area and raise a commotion. Dial 2-911 from any on campus phone, 9-11 from any off campus phone or activate an alarm box to summon emergency aid from USF Public Safety.
- Avoid walking alone at night. If you must walk alone, use a well-traveled route. You may request a safety escort from Public Safety (422-4222) or call a friend.
- Do not hitchhike!
- If you carry a purse, briefcase, etc., limit the amount of valuables inside.
- Always carry a form of identification on your person.



## Bicycle Safety & Tips

- Obey traffic signals and the rules of the road. Bicyclists must follow the same rules as motorists. Remember that bicyclists are required by California Law to stop at STOP signs.
- Wear a helmet! Head injuries cause about 85 percent of all bicycling fatalities.
- Ride with traffic, not against it. Keep a safe distance between you and the vehicle ahead.



## UNIVERSITY OF SAN FRANCISCO DEPARTMENT OF PUBLIC SAFETY

- Don't weave in and out of slow moving or stopped traffic.
- Before riding into traffic: stop, look left, right, left again and over your shoulder.
- Give pedestrians the right of way.
- Communicate! Get in the habit of using hand signals, your voice, a horn or bell when making left and right turns or making a slow stop. It is a great way to indicate your intentions to motorists, pedestrians, and other cyclists.
- Always be seen. Wear bright clothing during the day and reflective clothing in the night. Reflectors and lights are also helpful to stay visible!
- When you are not riding your bike, keep it properly locked – even at home. Use a strong, reliable U-lock and if possible combine a cable and a U-lock or even two U-locks for extra security. The more time and trouble it takes a thief to attack your bike the less likely it is that your bike will become a theft statistic.
- Keep your bicycle well maintained with regular check ups and service to your local bike shop.
- For more information on tips on safe bicycling in San Francisco and for the SF Bicycle Guide, visit [www.bicycle.sfgov.org](http://www.bicycle.sfgov.org).
- Bicycle Information Hotline, 585-BIKE (2453)
- San Francisco Bicycle Coalition, 431-BIKE (2453)
- National Bike Registry, [www.nationalbikeregistry.com](http://www.nationalbikeregistry.com)



### Bus Safety Tips

- Use the bus schedule to minimize the length of time waiting for the bus.
- Plan your route to use the busiest, best-lighted stop possible, both to get on and off a bus. If you must wait, stay near the attendant's stand or in the best-lighted area available.
- Be sure to have your fare or USF student ID out and ready before you leave home, office, or store.
- If few people are on the bus, sit near the driver.
- Keep your purse, shopping bag, backpack, packages, etc. on your lap, on your arm, or between your feet – not by themselves on an empty seat.
- Don't let yourself doze off on a bus; it can make you an easy target.
- If someone is bothering you on the bus, tell the driver.
- If you feel uneasy about getting off at your usual stop, stay on the bus until the next stop.