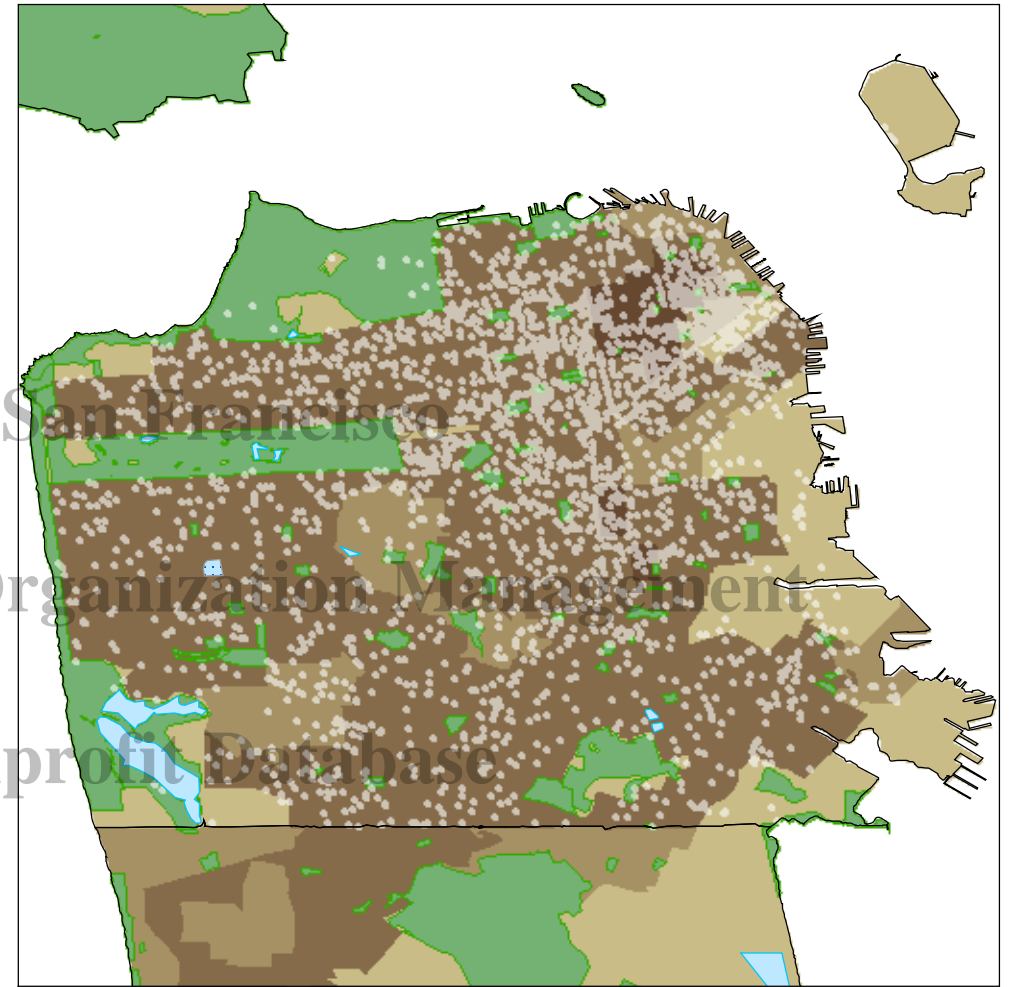
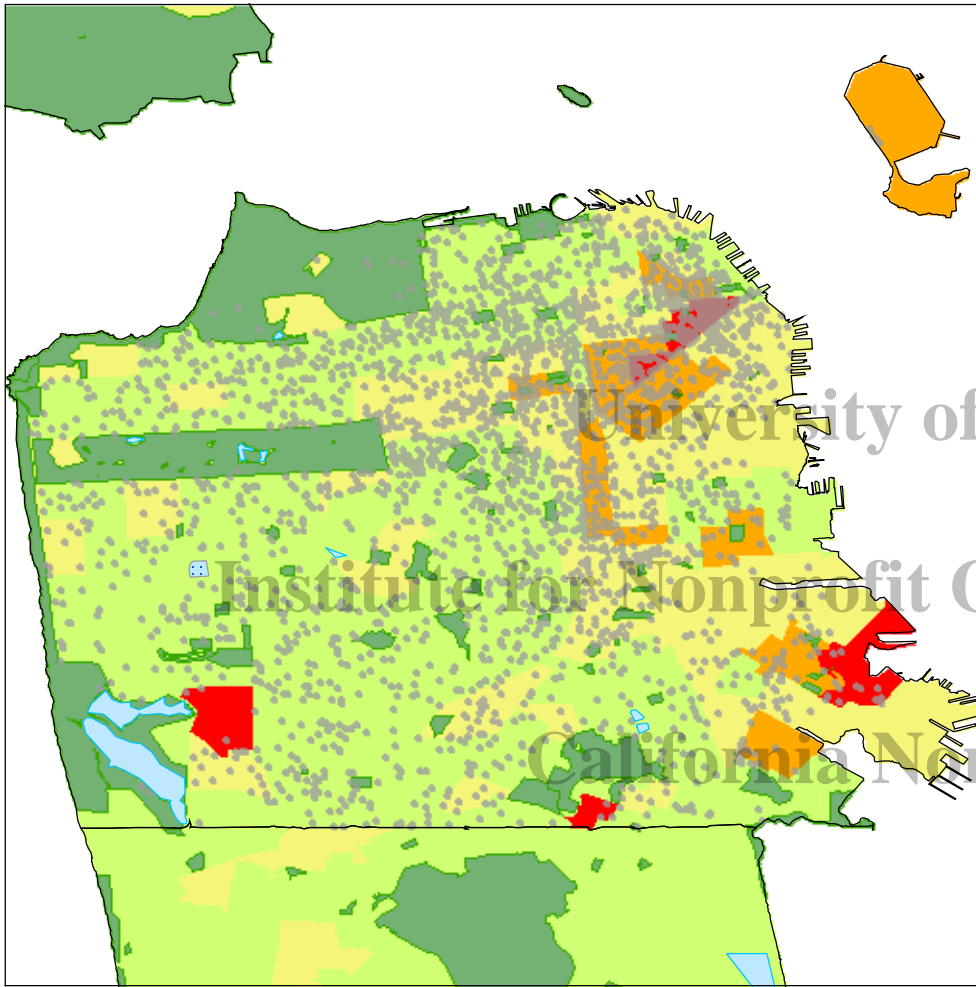


# Nonprofit Organizations in San Francisco, CA



## Neighborhood Poverty

| Census Tracts  |               |
|--|---------------|
| <span style="display:inline-block; width:15px; height:15px; background-color:#d9ead3;"></span> | Less than 10% |
| <span style="display:inline-block; width:15px; height:15px; background-color:#fce4d6;"></span> | 10 - 20%      |
| <span style="display:inline-block; width:15px; height:15px; background-color:#fdb462;"></span> | 20 - 30%      |
| <span style="display:inline-block; width:15px; height:15px; background-color:#e31a1c;"></span> | More than 30% |

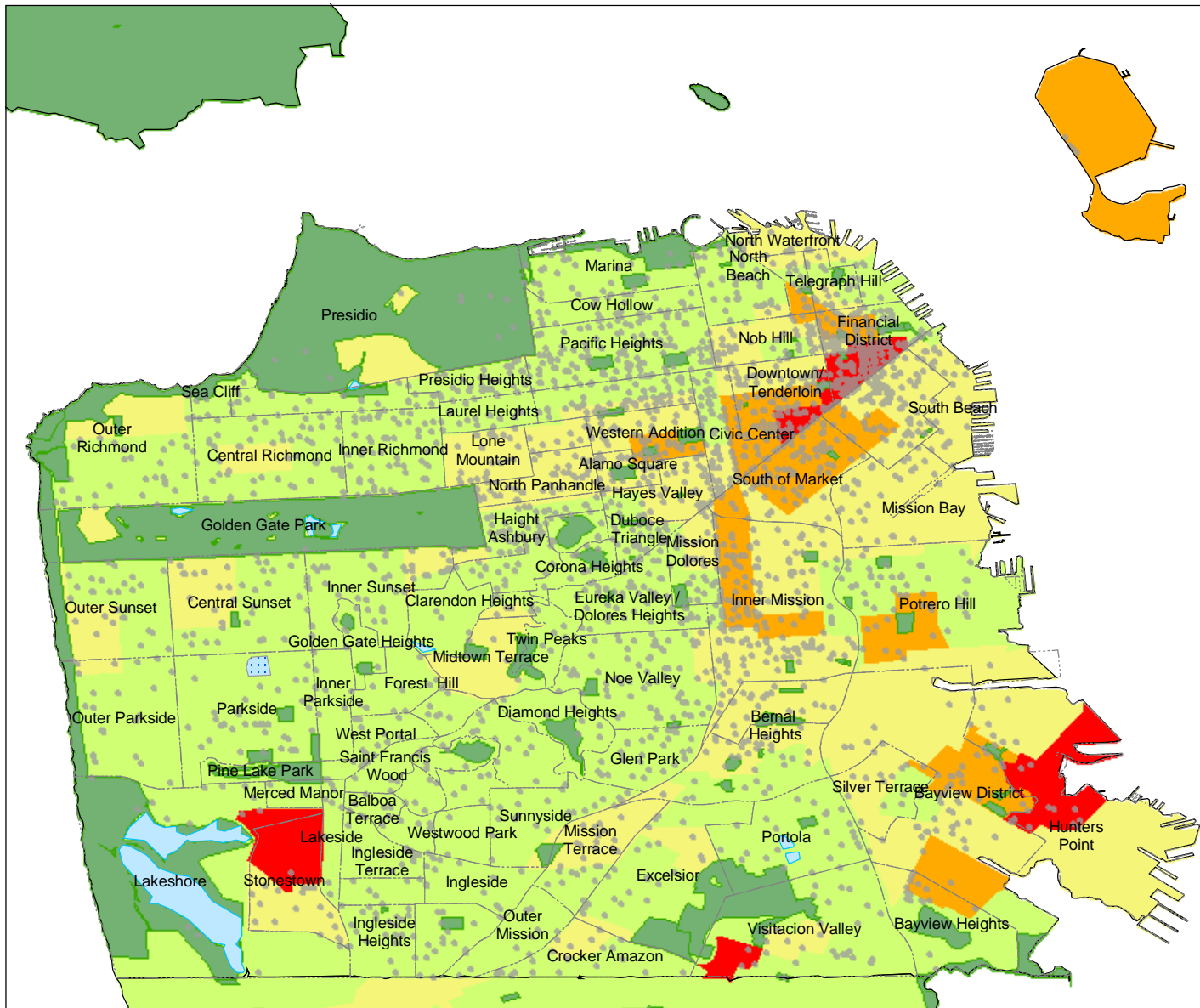
## LEGEND

- Each dot represents one nonprofit organization
- Parklands

## Population Density

| People per sq. mile  |                  |
|--|------------------|
| <span style="display:inline-block; width:15px; height:15px; background-color:#f4cccc;"></span> | 21 - 3,000       |
| <span style="display:inline-block; width:15px; height:15px; background-color:#e09292;"></span> | 3,001 - 10,000   |
| <span style="display:inline-block; width:15px; height:15px; background-color:#d9534f;"></span> | 10,001 - 50,000  |
| <span style="display:inline-block; width:15px; height:15px; background-color:#c0392b;"></span> | 50,001 - 200,000 |

# Nonprofit Organizations and Neighborhood Poverty in San Francisco, CA



## LEGEND

### San Francisco Charities (2003)

• Each dot represents one nonprofit organization

Parklands

Neighborhood Boundaries

### Neighborhood Poverty

#### Census Tracts

Less than 10%

10 - 20%

20 - 30%

More than 30%

*Data: 2003 IRS Business Master File of Exempt Organizations  
Downloaded May 2004*



0 1 2 Miles